

## 5 Crescent Way , London, N12 0RE

Brand newly refurbished three bedroom house with garden. Comprising a modern fitted kitchen diner, a bright separate reception room, a contemporary bathroom, guest WC and 3 bedrooms. The property also offers a private garden and off street parking for two cars. Ideally located close to public transport links and local schools.

Available now

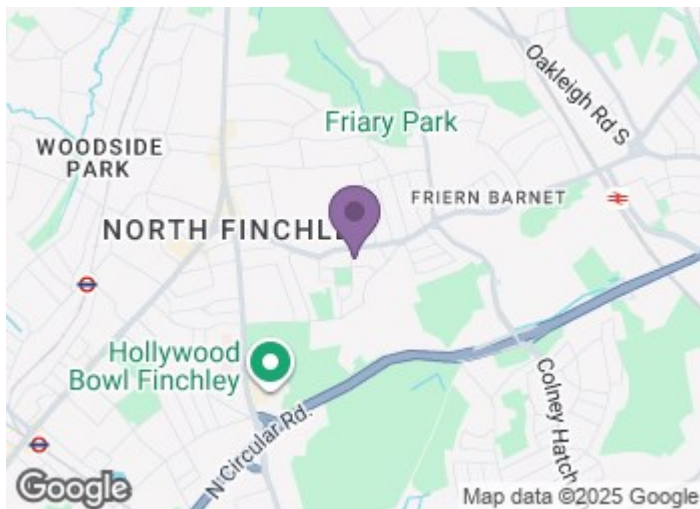
**£2,500**

# 5 Crescent Way

, London, N12 0RE



- Available 27th November
- Brand Newly Refurbished Throughout
- Three Bedrooms
- Private Garden
- Off Street Parking
- Fitted Kitchen
- Modern Bathroom



[Directions](#)

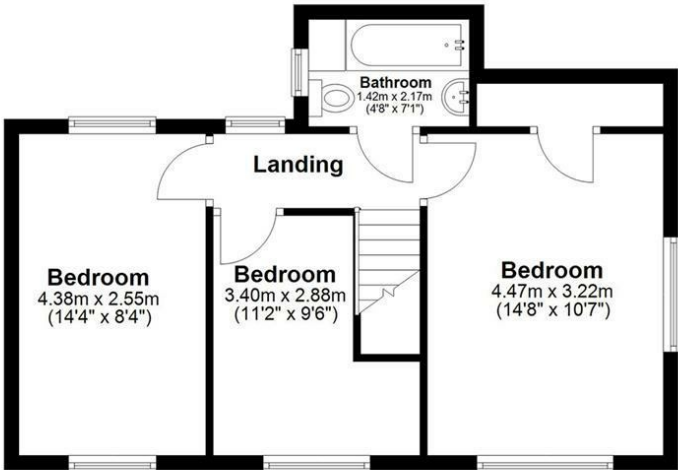




Floor Plan



GROUND FLOOR



FIRST FLOOR



**Evolve**  
www.evolve-uk.co.uk

This floor plan is for illustrative purposes only.  
Floor areas (including total floor area) openings are approximate.

TOTAL FLOOR AREA	Sq. meters	83.0
	Sq. feet	893.405

These particulars, whilst believed to be accurate are set out as a general outline only for guidance and do not constitute any part of an offer or contract. Intending purchasers should not rely on them as statements of representation of fact, but must satisfy themselves by inspection or otherwise as to their accuracy. No person in this firms employment has the authority to make or give any representation or warranty in respect of the property.

129 High Road, East Finchley, London, N2 8AJ  
Tel: 0208 883 2200 Email: sales@haven-estateagents.com

